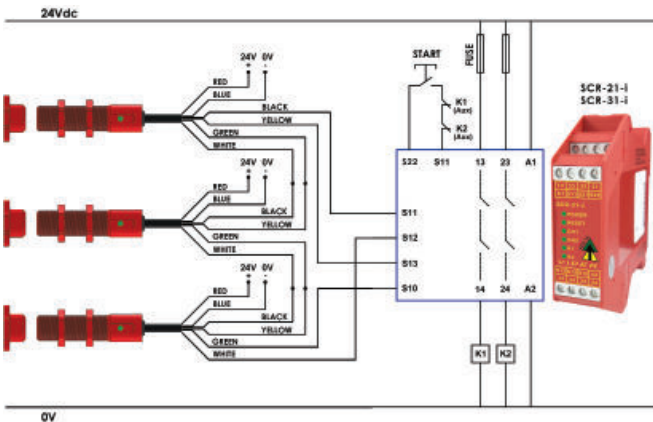


# RFID Coded Non Contact Type: BPF

## FEATURES:

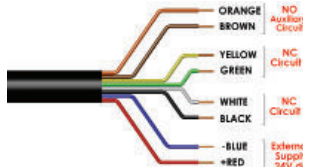
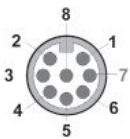
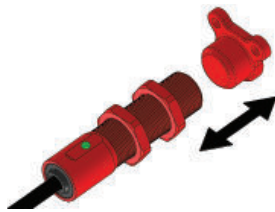
M18 cylindrical fitting suitable for all industry applications.  
 Easy to install - M18 threaded body - easy to set  
 10mm typical switching distance.  
 Suitable for harsh environments of Food Processing and Packaging  
 High specification red polyester housing  
 For use in applications up to PLe/Cat4 (EN ISO 13849-1) and SIL3 (IEC 61508)  
 LED indication and Quick Connect versions available  
 Can be high pressure hosed at high temperature due to IP69K rating  
 2NC 1NO circuits - high switching life - no moving parts

## CONNECTION EXAMPLE



Three switches connected in series to an SCR-21-i or SCR-31-i to give Dual Channel monitoring with monitored Manual Start and Contactor Feedback Check

## OPERATING DIRECTION:



Quick Connect QC M12 8 Way Male Plug Pin view from Switch	Flying Lead Colour	Circuit (Actuator Present)	Output Types Solid State
8	Orange	Auxiliary NO	200mA Max. 24Vdc
5	Brown	Auxiliary NO	200mA Max. 24Vdc
4	Yellow	Safety NC2	200mA Max. 24Vdc
6	Green	Safety NC2	200mA Max. 24Vdc
7	Black	Safety NC1	200mA Max. 24Vdc
1	White	Safety NC1	200mA Max. 24Vdc
2	Red	Supply +24Vdc	Supply 24Vdc +/- 10%
3	Blue	Supply 0Vdc	Supply 24Vdc +/- 10%

SALES NUMBER	MASTER CODED (same code every switch)	CABLE LENGTH
413001	BPF-M-RFID	5M
413002	BPF-M-RFID	10M
413003	BPF-M-RFID	QC-M12
413200	Replacement Actuator Master Coded	

SALES NUMBER	UNIQUELY CODED (every switch unique activation)	CABLE LENGTH
413101	BPF-U-RFID	5M
413102	BPF-U-RFID	10M
413103	BPF-U-RFID	QC-M12

## RFID Coded Actuation

Typical switching distance 10mm

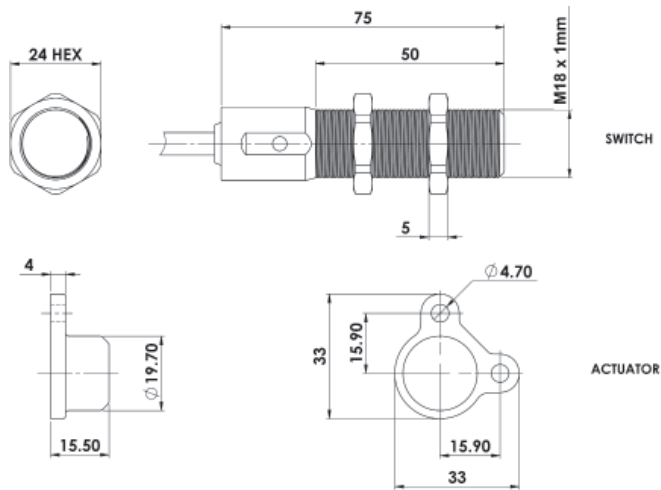
Will operate with most Safety Relays

IP69K



Quick Connect M12 versions fitted with 250mm (10") cable

## DIMENSIONS:



Standards: ISO14119 EN60947-5-3 EN60204-1 ISO13849-1 EN62061 UL508

### Safety Classification and Reliability Data:

Minimum switched current: 10V.d.c 1mA  
 Dielectric Withstand: 250V.ac  
 Insulation Resistance: 100 Mohms  
 Recommended setting gap: 5mm  
 Switching Distance: Sao 8mm Close Sar 20mm Open  
 Tolerance to Misalignment: 5mm in any direction from 5mm setting gap  
 Switching frequency: 1.0 Hz maximum  
 Approach speed: 200mm/m to 1000mm/s  
 Body material: Polyester  
 Temperature Range: -25/80C  
 Enclosure Protection: IP67/IP69K  
 Cable Type: PVC 8 core 6mm OD Conductors 0.25mm<sup>2</sup>

### Characteristic Data according to IEC62061 (used as a sub system):

Safety Integrity Level SIL3  
 PFH (1/h) 4.77E-10 Corresponds to 4.8% of SIL3  
 PFD 4.18E-05 Corresponds to 4.2% of SIL3  
 Proof Test Interval T1 20a

### Characteristic Data according to EN ISO13849-1:

Performance Level e If both channels are used in combination with SIL3/PLe control device  
 Category Cat4  
 MTTFd 1100a  
 Diagnostic Coverage DC 99% (high)  
 Number of operating days per year: d<sub>op</sub> = 365d  
 Number of operating hours per day: h<sub>op</sub> = 24h  
 B10d not mechanical parts implemented

When the product is used deviant from these assumptions (different load, operating frequency, etc.) the values have to be adjusted accordingly.

140101	Female QC Lead	M12 Female 5m. 8 way
140102	Female QC Lead	M12 Female 10m. 8 way

For all IDEM switches the normally closed (NC) circuits are closed when the guard is closed and the actuator is present.

# RFID Coded Non Contact Type: KPF

## FEATURES:

Industry housing shape 52mm wide 98mm long 40mm fixing  
 2NC 1NO semi conductor outputs for connection to safety relay  
 Visual LED indication of switch status  
 Fully encapsulated sealing and pre-wired 2m, 5m or 10m cable  
 Wide 14mm sensing with high tolerance to misalignment  
 M12 8 Way Quick Connect version available (flying lead 150mm)

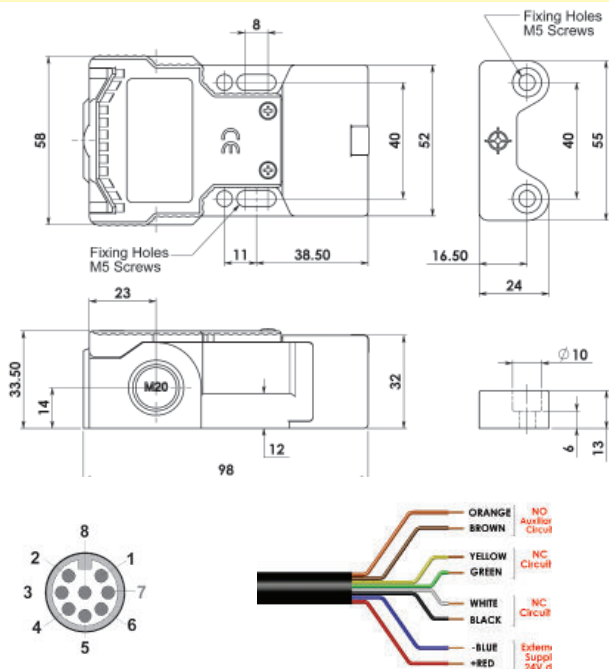
## APPLICATION:

IDEM KPF RFID Coded Non Contact switches have been designed to interlock hinged, sliding or removable guard doors. They have an industry standard fixing and are specifically advantageous where:

- (a) severe guard alignment exists using traditional tongue type versions
- (b) long mechanical life is required (no moving or touching parts)

When used in combination with Dual Channel Safety Relays they can be used to provide up to PLe ISO13849-1 SIL3 EN62061.

## DIMENSIONS:



Quick Connect QC M12 8 Way Male Plug Pin view from Switch	Flying Lead Colour	Circuit (Actuator Present)	Output Types Solid State
8	Orange	Auxiliary NO	200mA Max. 24Vdc
5	Brown	Auxiliary NO	
4	Yellow	Safety NC2	200mA Max. 24Vdc
6	Green	Safety NC2	
7	Black	Safety NC1	200mA Max. 24Vdc
1	White	Safety NC1	
2	Red	Supply +24Vdc	Supply 24Vdc +/- 10%
3	Blue	Supply 0Vdc	

SALES NUMBER	MASTER CODED (same code every switch)	CABLE LENGTH
408101	KPF-M-RFID END Cable (pre-wired)	5M
408102	KPF-M-RFID END Cable (pre-wired)	10M
408103	KPF-M-RFID END Cable (pre-wired)	QC-M12
408104	KPF-M-RFID LEFT Cable (pre-wired)	5M
408105	KPF-M-RFID LEFT Cable (pre-wired)	10M
408106	KPF-M-RFID LEFT Cable (pre-wired)	QC-M12
408107	KPF-M-RFID RIGHT Cable (pre-wired)	5M
408108	KPF-M-RFID RIGHT Cable (pre-wired)	10M
408109	KPF-M-RFID RIGHT Cable (pre-wired)	QC-M12
408201	Replacement Actuator Master Coded	

For all IDEM switches the normally closed (NC) circuits are closed when the guard is closed and the actuator is present.



## RFID Coded Actuation

Switching Tolerance up to 14mm

Will operate with most Safety Relays

IP69K



Standards: ISO14119 EN60947-5-3 EN62024-1 ISO13849-1 EN62061 UL508

### Safety Classification and Reliability Data:

Minimum switched current: 10V.dc 1mA  
 Dielectric Withstand: 250V.ac  
 Insulation Resistance: 100 Mohms  
 Recommended setting gap: 5mm  
 Switching Distance: Sao 8mm Close Sar 20mm Open  
 Tolerance to Misalignment: 5mm in any direction from 5mm setting gap  
 Switching frequency: 1.0 Hz maximum  
 Approach speed: 200mm/m to 1000mm/s  
 Body material: Polyester  
 Temperature Range: -25/55C  
 Enclosure Protection: IP67/IP69K  
 Cable Type: PVC 6 or 8 core 6mm OD Conductors 0.25mm<sup>2</sup>  
 Mounting Bolts: 2 x M4 Tightening torque 1.0 Nm  
 Mounting Position: Any

### Characteristic Data according to IEC62061 (used as a sub system):

Safety Integrity Level SIL3  
 PFH (1/h) 4.77E-10 Corresponds to 4.8% of SIL3  
 PFD 4.18E-05 Corresponds to 4.2% of SIL3  
 Proof Test Interval T<sub>1</sub> 20a

### Characteristic Data according to EN ISO13849-1:

Performance Level e If both channels are used in combination with a SIL3/PLe control device  
 Category Cat4  
 MTTFd 1100a  
 Diagnostic Coverage DC 99% (high)  
 Number of operating days per year: d<sub>op</sub> = 365d  
 Number of operating hours per day: h<sub>op</sub> = 24h  
 B10d not mechanical parts implemented

When the product is used deviant from these assumptions (different load, operating frequency, etc.) the values have to be adjusted accordingly.

SALES NUMBER	UNIQUELY CODED (every switch unique activation)	CABLE LENGTH
408001	KPF-U-RFID END Cable (pre-wired)	5M
408002	KPF-U-RFID END Cable (pre-wired)	10M
408003	KPF-U-RFID END Cable (pre-wired)	QC-M12
408004	KPF-U-RFID LEFT Cable (pre-wired)	5M
408005	KPF-U-RFID LEFT Cable (pre-wired)	10M
408006	KPF-U-RFID LEFT Cable (pre-wired)	QC-M12
408007	KPF-U-RFID RIGHT Cable (pre-wired)	5M
408008	KPF-U-RFID RIGHT Cable (pre-wired)	10M
408009	KPF-U-RFID RIGHT Cable (pre-wired)	QC-M12



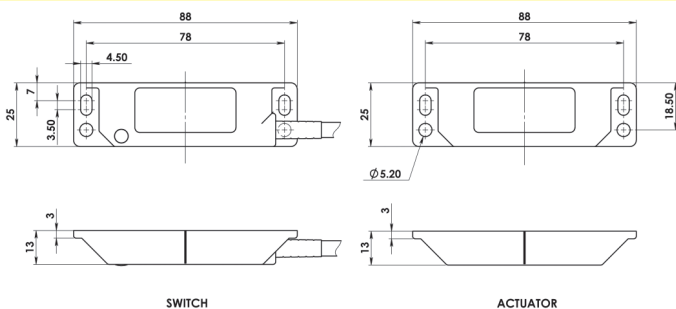
140101	Female QC Lead	M12 Female 5m. 8 way
140102	Female QC Lead	M12 Female 10m. 8 way

# RFID Coded Non Contact Type: LPF

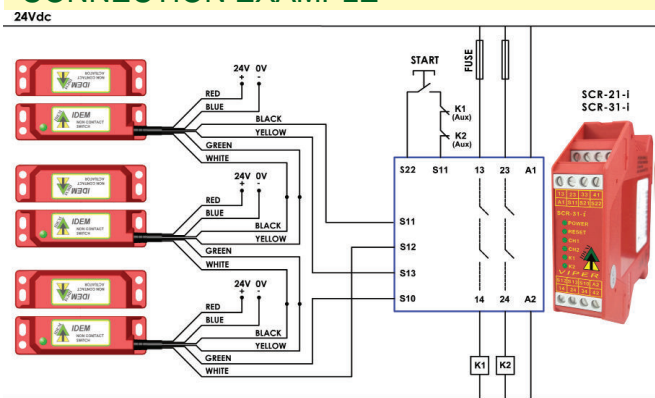
## FEATURES:

- Popular European fitting suitable for all industry applications
- LED indication
- Can be high pressure hosed at high temperature due to IP69K rating
- Wide sensing at 14mm with high tolerance to misalignment
- High specification polyester housing with integral back plate
- Quick Connect versions available
- Up to: PLe ISO13849-1
- 2NC 1NO circuits - high switching life - no moving parts
- Magnet holding option available for use with small guards

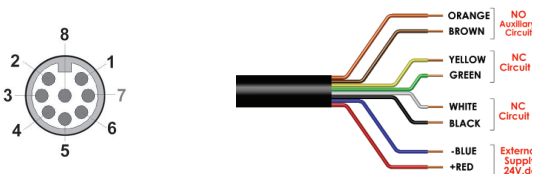
## DIMENSIONS:



## CONNECTION EXAMPLE



0V  
Three switches connected in series to an SCR-21-i or SCR-31-i to give Dual Channel monitoring with monitored Manual Start and Contactor Feedback Check



Quick Connect QC M12 8 Way Male Plug Pin view from Switch	Flying Lead Colour	Circuit (Actuator Present)	Output Types Solid State
8	Orange	Auxiliary NO	200mA Max. 24Vdc
5	Brown	Auxiliary NO	
4	Yellow	Safety NC2	200mA Max. 24Vdc
6	Green	Safety NC2	
7	Black	Safety NC1	200mA Max. 24Vdc
1	White	Safety NC1	
2	Red	Supply +24Vdc	Supply 24Vdc +/- 10%
3	Blue	Supply 0Vdc	

SALES NUMBER	MASTER CODED (same code every switch)	CABLE LENGTH
404101	LPF-M-RFID	2M
404102	LPF-M-RFID	5M
404103	LPF-M-RFID	10M
404104	LPF-M-RFID	QC-M12
404201	Replacement Actuator Master Coded	

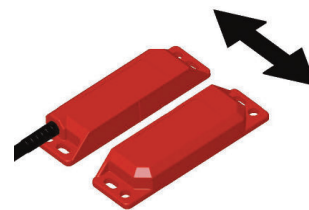
For all IDEM switches the normally closed (NC) circuits are closed when the guard is closed and the actuator is present.



**RFID Coded Actuation**  
**Switching Tolerance up to 14mm**  
**Will operate with most Safety Relays**



## OPERATING DIRECTION:



Standards: ISO14119 EN60947-5-3 EN60204-1 ISO13849-1 EN62061 UL508

- Safety Classification and Reliability Data:**
- Minimum switched current: 10V.dc 1mA
  - Dielectric Withstand: 250V.ac
  - Insulation Resistance: 100 Mohms
  - Recommended setting gap: 5mm
  - Switching Distance: Sao 8mm Close Sar 20mm Open
  - Tolerance to Misalignment: 5mm in any direction from 5mm setting gap
  - Switching frequency: 1.0 Hz maximum
  - Approach speed: 200mm/m to 1000mm/s
  - Body material: Polyester
  - Temperature Range: -25/80C
  - Enclosure Protection: IP67/IP69K
  - Cable Type: PVC 6 or 8 core 6mm OD Conductors 0.25mm<sup>2</sup>
  - Mounting Bolts: 2 x M4 Tightening torque 1.0 Nm
  - Mounting Position: Any

### Characteristic Data according to IEC62061 (used as a sub system):

- Safety Integrity Level: SIL3
- PFH (1/h): 4.77E-10 Corresponds to 4.8% of SIL3
- PFD: 4.18E-05 Corresponds to 4.2% of SIL3
- Proof Test Interval T<sub>1</sub>: 20a

### Characteristic Data according to EN ISO13849-1:

- Performance Level: e If both channels are used in combination with a SIL3/PLe control device
- Category: Cat4
- MTTFd: 1100a
- Diagnostic Coverage DC: 99% (high)
- Number of operating days per year: d<sub>op</sub> = 365d
- Number of operating hours per day: h<sub>op</sub> = 24h
- B10d: not mechanical parts implemented

When the product is used deviant from these assumptions (different load, operating frequency, etc.) the values have to be adjusted accordingly.

140101	Female QC Lead	M12 Female 5m. 8 way
140102	Female QC Lead	M12 Female 10m. 8 way

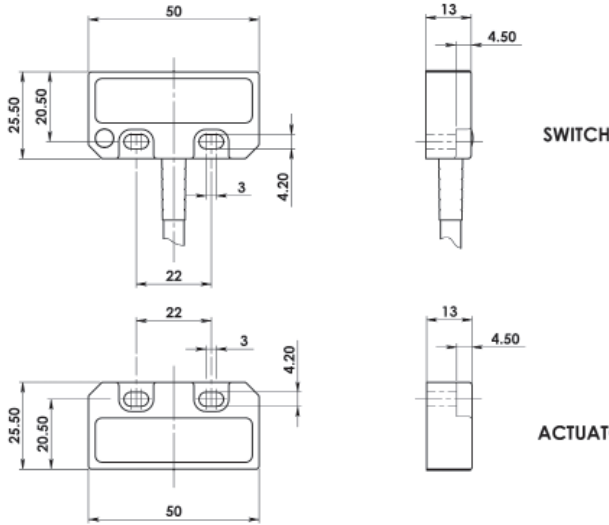


# RFID Coded Non Contact Type: SPF

## FEATURES:

Universal fitting - established 22mm footprint suitable for most applications  
 Withstands environments where high humidity or hose down is required  
 High specification and durable polyester housing  
 Wide 14mm sensing with high tolerance to misalignment  
 Up to: PLe ISO13849-1  
 2NC 1NO circuits - high switching life - no moving parts  
 Quick Connect versions available

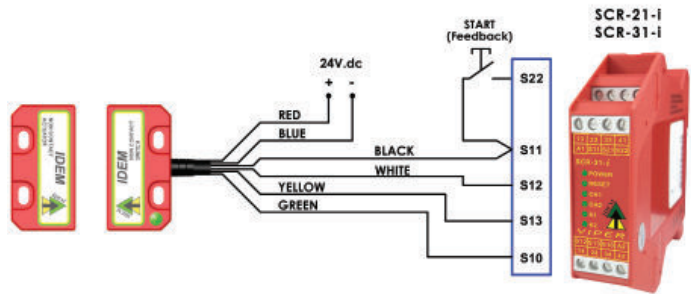
## DIMENSIONS:



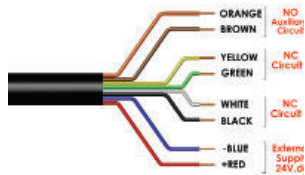
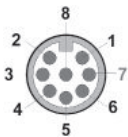
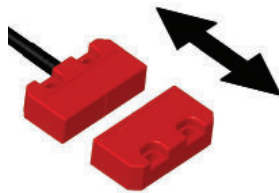
**RFID Coded Actuation**  
**Switching Tolerance up to 14mm**  
**Will operate with most Safety Relays**



## CONNECTION EXAMPLE:



## OPERATING DIRECTION:



Single switch connected to an SCR-21-i or SCR-31-i to give Dual Channel Monitoring with Manual Start.

**Standards:** ISO14119 EN60947-5-3 EN60204-1 ISO13849-1 EN62061 UL508

### Safety Classification and Reliability Data:

- Minimum switched current: 10V.dc 1mA
- Dielectric Withstand: 250V.ac
- Insulation Resistance: 100 Mohms
- Recommended setting gap: 5mm
- Switching Distance: Sao 8mm Close, Sar 20mm Open
- Tolerance to Misalignment: 5mm in any direction from 5mm setting gap
- Switching frequency: 1.0 Hz maximum
- Approach speed: 200mm/m to 1000mm/s
- Body material: Polyester
- Temperature Range: -25/80C
- Enclosure Protection: IP67/IP69K
- Cable Type: PVC 6 or 8 core 6mm OD Conductors 0.25mm<sup>2</sup>
- Mounting Bolts: 2 x M4 Tightening torque 1.0 Nm
- Mounting Position: Any

### Characteristic Data according to IEC62061 (used as a sub system):

- Safety Integrity Level: SIL3
- PFH (1/h): 4.77E-10 Corresponds to 4.8% of SIL3
- PFD: 4.18E-05 Corresponds to 4.2% of SIL3
- Proof Test Interval T<sub>1</sub>: 20a

### Characteristic Data according to EN ISO13849-1:

- Performance Level: e If both channels are used in combination with a SIL3/PL e control device
- Category: Cat4
- MTTFd: 1100a
- Diagnostic Coverage DC: 99% (high)
- Number of operating days per year: d<sub>op</sub> = 365d
- Number of operating hours per day: h<sub>op</sub> = 24h
- B10d: not mechanical parts implemented

When the product is used deviant from these assumptions (different load, operating frequency, etc.) the values have to be adjusted accordingly.

Quick Connect QC M12 8 Way Male Plug Pin view from Switch	Flying Lead Colour	Circuit (Actuator Present)	Output Types Solid State
8	Orange	Auxiliary NO	200mA Max. 24Vdc
5	Brown	Auxiliary NO	200mA Max. 24Vdc
4	Yellow	Safety NC2	200mA Max. 24Vdc
6	Green	Safety NC2	200mA Max. 24Vdc
7	Black	Safety NC1	200mA Max. 24Vdc
1	White	Safety NC1	200mA Max. 24Vdc
2	Red	Supply +24Vdc	Supply 24Vdc +/- 10%
3	Blue	Supply 0Vdc	

SALES NUMBER	MASTER CODED (same code every switch)	CABLE LENGTH
405101	SPF-M-RFID	2M
405102	SPF-M-RFID	5M
405103	SPF-M-RFID	10M
405104	SPF-M-RFID	QC-M12
405201	Replacement Actuator Master Coded	

SALES NUMBER	UNIQUELY CODED (every switch unique activation)	CABLE LENGTH
405001	SPF-U-RFID	2M
405002	SPF-U-RFID	5M
405003	SPF-U-RFID	10M
405004	SPF-U-RFID	QC-M12

	140101	Female QC Lead	M12 Female 5m. 8 way
	140102	Female QC Lead	M12 Female 10m. 8 way

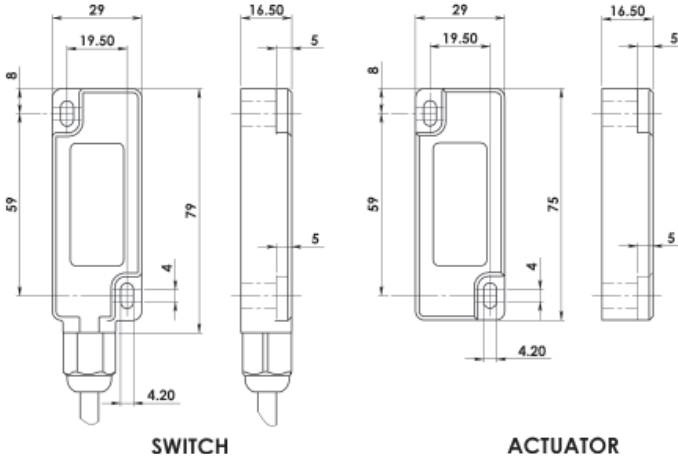
For all IDEM switches the normally closed (NC) circuits are closed when the guard is closed and the actuator is present.

# RFID Coded Non Contact Type: WPF

## FEATURES:

Designed with a slim fitting making it suitable for all industry applications  
 Wide 14mm sensing with high tolerance to misalignment  
 High specification and durable polyester housing  
 Wide 14mm sensing with high tolerance to misalignment  
 LED indication - no moving parts - survives shock and vibration  
 Up to: PLe ISO13849-1  
 2NC 1NO circuits - high switching life - no moving parts  
 Quick Connect versions available

## DIMENSIONS:



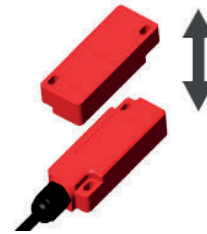
**Coded Magnetic Actuation**  
**Switching Tolerance up to 14mm**  
**Will operate with most Safety Relays**

**IP69K**

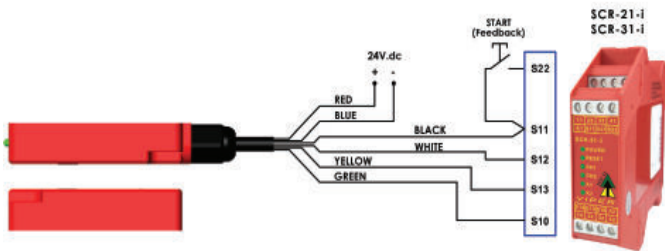


Quick Connect M12 versions fitted with 250mm (10") cable

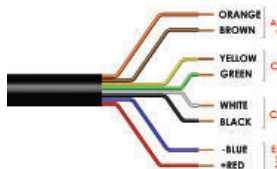
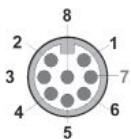
## OPERATING DIRECTION:



## CONNECTION EXAMPLE



One switch connected to an SCR-21-i or SCR-31-i to give Dual Channel monitoring with manual start and contactor feedback check.



**Standards:** ISO14119 EN60947-5-3 EN60204-1 ISO13849-1 EN62061 UL508

### Safety Classification and Reliability Data:

- Minimum switched current: 10V.d.c 1mA
- Dielectric Withstand: 250V.ac
- Insulation Resistance: 100 Mohms
- Recommended setting gap: 5mm
- Switching Distance: Sao 8mm Close, Sar 20mm Open
- Tolerance to Misalignment: 5mm in any direction from 5mm setting gap
- Switching frequency: 1.0 Hz maximum
- Approach speed: 200mm/m to 1000mm/s
- Body material: Polyester
- Temperature Range: -25/55C
- Enclosure Protection: IP67/IP69K
- Cable Type: PVC 6 or 8 core 6mm OD Conductors 0.25mm<sup>2</sup>
- Mounting Bolts: 2 x M4 Tightening torque 1.0 Nm
- Mounting Position: Any

### Characteristic Data according to IEC62061 (used as a sub system):

- Safety Integrity Level: SIL3
- PFH (1/h): 4.77E-10 Corresponds to 4.8% of SIL3
- PFH: 4.18E-05 Corresponds to 4.2% of SIL3
- Proof Test Interval T<sub>1</sub>: 20a

### Characteristic Data according to EN ISO13849-1:

- Performance Level: e If both channels are used in combination with a SIL3/PLe control device
- Category: Cat4
- MTTFd: 1100a
- Diagnostic Coverage DC: 99% (high)
- Number of operating days per year: d<sub>op</sub> = 365d
- Number of operating hours per day: h<sub>op</sub> = 24h
- B10d: not mechanical parts implemented

When the product is used deviant from these assumptions (different load, operating frequency, etc.) the values have to be adjusted accordingly.

Quick Connect QC M12 8 Way Male Plug Pin view from Switch	Flying Lead Colour	Circuit (Actuator Present)	Output Types Solid State
8	Orange	Auxiliary NO	200mA Max. 24Vdc
5	Brown	Auxiliary NO	
4	Yellow	Safety NC2	200mA Max. 24Vdc
6	Green	Safety NC2	
7	Black	Safety NC1	200mA Max. 24Vdc
1	White	Safety NC1	
2	Red	Supply +24Vdc	Supply 24Vdc +/- 10%
3	Blue	Supply 0Vdc	

SALES NUMBER	MASTER CODED (same code every switch)	CABLE LENGTH
407102	WPF-M-RFID	5M
407103	WPF-M-RFID	10M
407104	WPF-M-RFID	QC-M12
407201	Replacement Actuator Master Coded	

SALES NUMBER	UNIQUELY CODED (every switch unique activation)	CABLE LENGTH
407002	WPF-U-RFID	5M
407003	WPF-U-RFID	10M
407004	WPF-U-RFID	QC-M12

For all IDEM switches the normally closed (NC) circuits are closed when the guard is closed and the actuator is present.

140101	Female QC Lead	M12 Female 5m. 8 way
140102	Female QC Lead	M12 Female 10m. 8 way