



Justrite Safety Group

48.1
CATALOG

INDUSTRIAL AND COMMERCIAL MATTING FULL LINE CATALOG



UNSURPASSED QUALITY WORLDWIDE

ELECTROSTATIC DISCHARGE (ESD) MATTING







ESD SAFETY/ANTI-STATIC - Dry

825 - CUSHION STAT™ w/DYNA-SHIELD®

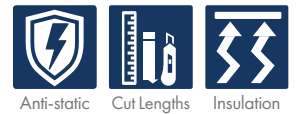
- Static dissipative PVC sponge
- Absorbs static electricity keeping sensitive electronic circuitry safe
- Dyna-Shield® increases strength and provides long lasting wear
- Beveled on all 4 sides
- RG 10⁶ - 10⁹ Ω; RP 10⁶ - 10⁹ Ω
- Grounding cord available, not required



Stock Sizes	2'x3', 3'x5', 3'x10'
Roll Sizes	3'x60', 4'x60'
Thickness	3/8"
Cut Lengths	3' and 4' widths (up to 60' long)
Colors	 Black  Grey  Black/Yellow

Applications: Assembly or testing areas for circuitry: computers, chips, electronics of all kinds.

Performance:	Good	Better	Best	Superior
Wear Resistance				
Anti-fatigue Performance				
Slip Resistance				

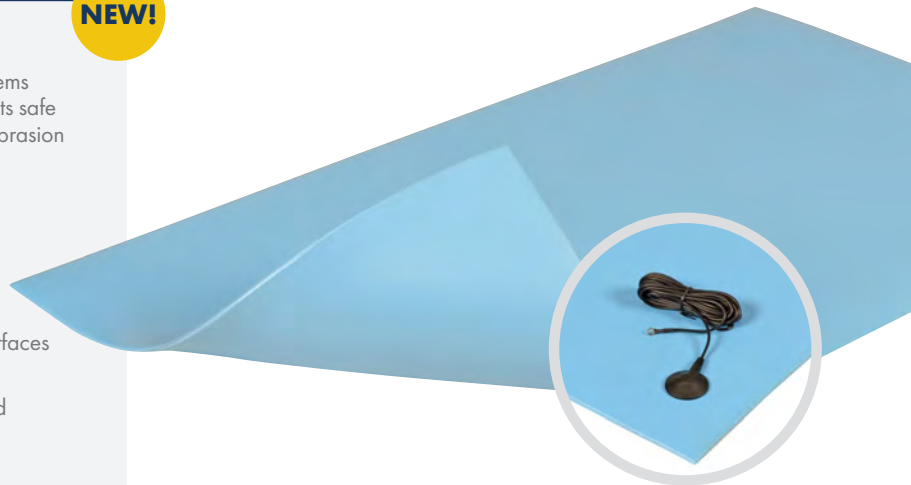



827 - ANTI-STAT P.O.P.™

NEW!

Vinyl work surface that dissipates static from conductive items placed on it. Protects table and keeps sensitive components safe from damaging static shocks. Smooth top surface that is abrasion resistant and easy to wipe clean.

- Single layer vinyl work surface that dissipates static to keep sensitive components safe
- Smooth top surface
- ESD Static Dissipative
- Meets EOS/ESD-S4, measured resistance for work surfaces RG 10⁷ Ω 10 and RP 10⁸ Ω
- Electrostatic charge (walking test), meets ISO6356 and EN1815
- Grounding cord available, not required



Roll Sizes	30"x40', 3'x40'
Thickness	1/4"
Cut Lengths	2', 30" and 3' widths (up to 60' long)
Colors	 Blue

Applications: Tabletop work surfaces.

Performance:	Good	Better	Best	Superior
Wear Resistance				
Anti-fatigue Performance				
Slip Resistance				

ESD SAFETY/ANTI-STATIC - Dry

558 - CUSHION-EASE® ESD SOLID

NEW!

- ESD static dissipative
- Anti-slip pebble surface
- High quality ESD rubber compound mat
- Modular mat with available ramps
- (see pg25)
- RG $10^6 - 10^9 \Omega$; RP $10^6 - 10^9 \Omega$
- Grounding cord available, not required

Stock Sizes	3'x3'
Thickness	3/4"
Colors	Black

WARNING: Cancer and Reproductive Harm - www.P65Warnings.ca.gov. See pg 77-78

558 - CUSHION EASE® ESD SOLID



Applications:
Automated manufacturing lines.

573 - DE-FLEX™ ESD

NEW!

- ESD static dissipative
- Diamond plate surface
- High quality ESD rubber compound mat
- Modular mat with available ramps
- (see pg29)
- RG $10^6 - 10^9 \Omega$; RP $10^6 - 10^9 \Omega$
- Grounding cord available, not required

Stock Sizes	18"x18"
Thickness	3/4"
Colors	Black

573 - DE-FLEX™ ESD



Applications:
Assembly, test equipment, and inspection stations.

463 - SKYMASTER® HD ESD

NEW!

- ESD static dissipative
- Bubble design with suction cup backing
- High quality ESD rubber compound mat
- Modular mat with available ramps (see pg31)
- RG $10^6 - 10^9 \Omega$; RP $10^6 - 10^9 \Omega$

Stock Sizes	3'x3'
Thickness	5/8"
Colors	Black

463 - SKYMASTER® HD ESD



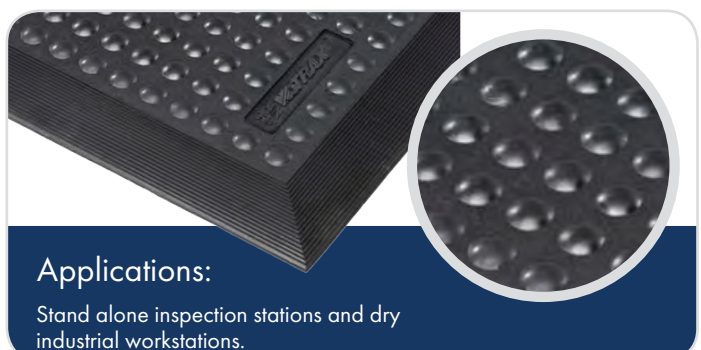
Applications:
Electronic manufacturing and laboratories.

457 - SKYSTEP™ ESD

- ESD static dissipative
- Bubble design with suction cup backing
- High quality ESD rubber compound mat
- Beveled edges on all 4 sides
- RG $10^5 - 10^7 \Omega$; RP $10^5 - 10^7 \Omega$
- Grounding cord available, not required

Stock Sizes	2'x3', 3'x4', 3'x5'
Thickness	5/8"
Colors	Black

457 - SKYSTEP™ ESD



Applications:
Stand alone inspection stations and dry industrial workstations.


ESD SAFETY/ANTI-STATIC - Dry

826 - DIAMOND STAT™ 927 - DIAMOND STAT™ GRANDE™

NEW!

- Electrically conductive PVC diamond plate top surface is combined with a dense closed cell PVC foam base
- UniFusion™ bond guaranteed for the life of the mat
- RedStop™ non-slip backing to reduce mat slippage
- Beveled edges on all 4 sides
- Certified by the NFSI (National Floor Safety Institute)
- RG 10⁴ - 10⁶ Ω; RP 10⁴ - 10⁶ Ω
- Grounding cord included, required
- Certified by the NFSI (National Floor Safety Institute)



Stock Sizes	2'x3', 3'x5', 3'x12'
Roll Sizes	2'x75', 3'x75', 4'x75'
Thickness	9/16" (826), 1" (927)
Cut Lengths	2', 3' and 4' widths (up to 75' long)
Colors	 Black

WARNING: Cancer and Reproductive Harm - www.P65Warnings.ca.gov. See pg 77-78

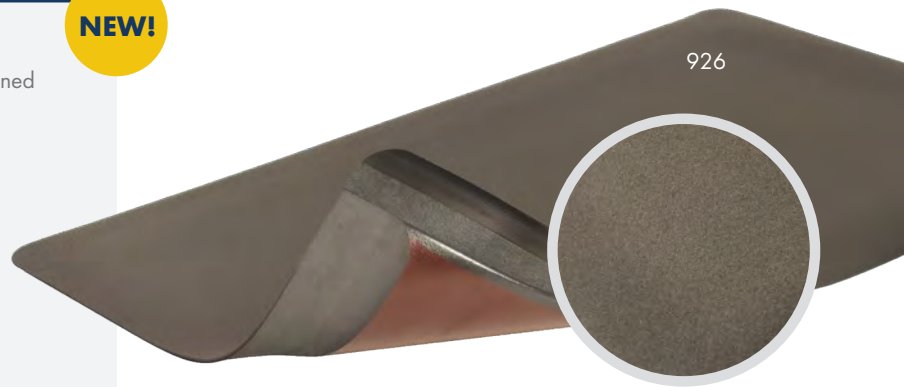
Applications: Assembly or testing areas for circuitry: computers, chips, electronics of all kinds.


Performance:	Good	Better	Best	Superior
Wear Resistance			826	927
Anti-fatigue Performance			826	927
Slip Resistance			826	927

926 - SMOOTH STAT™

NEW!

- Electrically conductive PVC smooth top surface is combined with a dense closed cell PVC foam base
- UniFusion™ bond guaranteed for the life of the mat
- RedStop™ non-slip backing to reduce mat slippage
- Beveled edges on all 4 sides
- Certified by the NFSI (National Floor Safety Institute)
- RG 10⁴ - 10⁶ Ω; RP 10⁴ - 10⁶ Ω
- Grounding cord included, required
- Certified by the NFSI (National Floor Safety Institute)



Stock Sizes	2'x3', 3'x5'
Roll Sizes	3'x75'
Thickness	9/16"
Cut Lengths	3' wide (up to 75' long)
Colors	 Black

WARNING: Cancer and Reproductive Harm - www.P65Warnings.ca.gov. See pg 77-78

Applications: Assembly or testing areas for circuitry: computers, chips, electronics of all kinds.

Performance:	Good	Better	Best	Superior
Wear Resistance			926	
Anti-fatigue Performance			926	
Slip Resistance			926	