



EXPLOSION PROOF INDUSTRIAL 500 & 600

The Industrial Explosion Proof Foot Switch was designed to operate in the roughest environments. Equipped with an alert orange foot guard for added protection the Explosion Proof switch is as robust a foot switch as you will find. This switch is very popular in many different applications that require a switch that can last in the harshest conditions. Linemaster's Explosion Proof 500 series offers the end user a splash resistant solution in the field and if waterproof is needed the 600 Series switches are the choice. Available in a single pedal or twin pedal version to suit the various needs of our customers. Only from LINEMASTER® - American made innovation at work.

LIT-035 Rev. C



LINEMASTER Switch Corporation
Tel (860) 974-1000

29 Plaine Hill Rd, P.O. Box 238
Woodstock, Connecticut 06281-0238 USA
Fax (800) 974-FOOT(3668)

www.linemaster.com

EXPLOSION PROOF INDUSTRIAL 500 & 600

FEATURES

- Non sparking cast aluminum housing
- Aluminum full guard with integral baseplate painted alert orange
- All standard models supplied with a 3/4"-14 N.P.T. threaded rigid metal conduit entry and mounting provisions in the base plate
- Integral handle for ease of moving
- The two pedal model is supplied with a divider bar between pedals which helps prevent accidental operation of both pedals at one time
- Waterproof model available under "600 Series"
- Medical Explosion Proof models available
- Designed to operate in hazardous locations



EXPLOSION PROOF INDUSTRIAL 500

SIZE (H x W x D): 4.38 x 11.00 x 10.25 In.

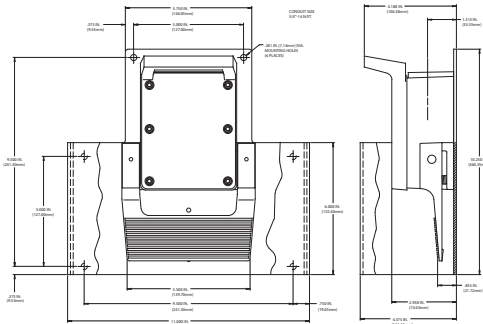
WEIGHT: 8.75 lbs.



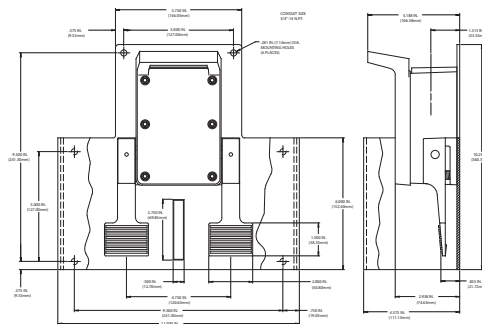
EXPLOSION PROOF INDUSTRIAL 600

SIZE (H x W x D): 4.38 x 11.00 x 10.25 In.

WEIGHT: 9.50 lbs.



SINGLE PEDAL



TWIN PEDAL

AGENCY APPROVALS	EN 60529 DEGREE OF PROTECTION	CATALOG NUMBER	DESCRIPTION	CIRCUIT	FORM	ELECTRICAL RATINGS	SPECIFICATIONS
cULus	IP41	592-EX	Single Pedal - Momentary	SPDT	C	15 A 125-250 VAC 10 A 250 VAC	Class I, Division 1, Group D Class II, Group F & G Class I, Zone 1, Group IIA NEMA Type 2, UL Enclosure 2
cULus	IP41	594-EX	Single Pedal - Momentary	DPDT	C	3/4 H.P. 125 VAC 1 H.P. 250 VAC	
cULus	IP41	597-EX	Two Pedal - Momentary	Each Pedal SPDT	C	Heavy Pilot Duty 250 VAC Max. 3 A 28 VDC	

AGENCY APPROVALS	EN 60529 Degree of Protection	CATALOG NUMBER	DESCRIPTION	CIRCUIT	FORM	ELECTRICAL RATINGS	SPECIFICATIONS
cULus	IP68	602-EX	Single Pedal - Momentary	SPDT	C	15 A 125-250 VAC 10 A 250 VAC	Class I, Division 1, Group D Class II, Group F & G Class I, Zone 1, Group IIA NEMA Type 2, 3, 4, 6, 6P, 13, 7D & 9F UL Enclosure 2, 3, 4, 6, 6P, 7, 9, 13 Meets IEC 60601-2-2
cULus	IP68	604-EX	Single Pedal - Momentary	DPDT	C	3/4 H.P. 125 VAC 1 H.P. 250 VAC	
cULus	IP68	607-EX	Two Pedal - Momentary	Each Pedal SPDT	C	Heavy Pilot Duty 250 VAC Max. 3 A 28 VDC	